



149 Patons Road, Axe Creek Vic 3551

Telephone: 5439 6366

Email: [eppalock.ps@edumail.vic.gov.au](mailto:eppalock.ps@edumail.vic.gov.au)

Website: <http://www.eppalockps.vic.edu.au>

May 15th  
Issue 13/2019

## SCHOOL VALUES

- **Care and Compassion** – Care for self and others
- **Honesty and Trustworthiness** – Be honest, sincere and seek the truth
- **Respect** – Treat others with consideration and regard: respect another person's point of view
- **Responsibility**—Be accountable for one's own actions, resolve differences in constructive, non violent and peaceful ways; contribute to society and civic life, take care of the environment

### Welcome

We are now in a position to announce that Nicole Mannes is the successful applicant for the Office Administration Support role here at school. Nicole will work in the Office area in an official capacity for two days a week, supporting Marie and staff. Nicole's two days are yet to be determined, but will involve a transition period where she will work alongside Marie before filling at least one of the days where Marie is not at school. Welcome Nikki.

### Canoe Trip

Yesterday our group of brave travellers from Grade 5/6 ventured off on the first ever Eppalock PS Canoe trip with Mr McCartney and Milly Burgess. This opportunity is provided by the La Trobe University and we have been very lucky to make that connection through Mr McCartney and his Outdoor Education links. We know they will have a great time and have a lifelong memory to share when they get back. A huge thanks to Mr McCartney for all his work with the trip and bringing it to life at Eppalock PS. Also to Milly for attending. We hope to hear all about it on Monday at assembly.

### Fence Progress through School Pride and Sports Grant and Inclusive Schools Project

We are almost at the final stages of the fence being completed and we should see this done by the end of the week or early next week. Thanks for your patience with this work. We are still in discussion with Department representatives in regards to our toilet block and movement of the PE shed. This has been a long process. Rim, our architect, for the Inclusive Schools Grant has been out to measure up our space for his work which aims to begin in July/August. All things going well, we might see this particular project finished up by the end of the year. Both of these projects aim to enable the wider Eppalock PS community to view the school as a community hub where they feel welcome and encouraged to use the facilities out of school hours from time to time.

### NAPLAN

Grade 3 have completed the majority of assessments at this stage. Well done to all students involved. It is important to see these assessments as just a part of a normal school day, but also touch base with your child to see how they are feeling and coping with them. At school we encourage 'personal best' from students. Grade 5 students will take part early next week when they return from their trip.

### School Values & School Wide Positive Behaviours

***'To develop resilient students who display behaviours and attitudes that reflect school values.'***

At school council last week we shared our School Action Plan which gives a basic outline of the steps we are working to implement this year in School Wide Positive Behaviours. One of those steps has been the acknowledgement of positive behaviours through the raffle ticket system. Our students have responded well to this.

This week we have begun work on tightening up our eating time process with the introduction of a new system to return lunch boxes to rooms after eating times. Students have been provided with a class tub at the eating space to place their lunch boxes. This is collected by older students at the end of break time and placed back in the classroom ensuring the yard is a bit tidier and also to ensure food items are not left out in the weather. We will continue to remind students of this process until it becomes routine.

I would also like to acknowledge Annemieka for some positive behaviour shown on Monday morning. Without being asked or prompted, Annemieka noticed that Lynne needed a little help wiping down some tables so jumped in and helped out. This is a great example of what we are looking for around the school and Annemieka is just one of our students who would do this quite regularly. Well done Annemieka.

On Monday we also had the pleasure of hearing a report of the Live for Lily bike ride that Adrian Martins participated in recently in Tasmania. Adrian's participation is a great way to role model what it truly means to make a positive contribution to community. We congratulate him on completing the ride and, most importantly, being part of such a great cause. We look forward to being involved in the future and hearing all about future rides and events.

### **Woolworths Earn and Learn**

Just a reminder that we have a box at school to collect stickers from this promotion. Harry was very excited to drop in some of these into our box at school on Monday. We also have boxes set up at Strathdale and Marketplace Woolworths stores. You don't have to change your current shopping practices, but if you have some stickers to support this promotion please drop them in. These types of promotions can enable us to obtain a variety of school items.

### **Junior School Council and House Captains**

These have been selected after speeches and a vote recently. Congratulations to the following students;

- Pippa
- Sarinah
- Lachlan
- Connor
- Miller
- Jack
- Ned

These students will be presented with their badges on Monday at assembly if families would like to come and watch.

### **Education Week**

Next week is Education Week. We have a few different events happening.

Monday – 9:00am Back to school assembly followed by a reading session.

Monday - 5:30pm-6:30pm 2020 Foundation information night.

Wednesday – 9:00am – 11:30am School Open Morning. MARC van day.

Thursday – 9:00am Informal Instrumental Music performances by students in Drew Thorpe music program.

Friday – 8:00am Walk to school day. See Educate Us for more details.

Friday 2:15-3:15pm Hobbies and Clubs program begins.

Thanks  
Mr O'Neill

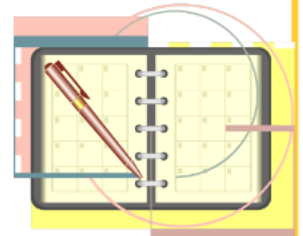
### **Congratulations Mr McCartney**



We have recently received the news that Mr McCartney has now become an 'Ongoing' member of staff at Eppalock PS. This means that we have Mr McCartney in our school community for an ongoing period of time. We are very lucky to have Mr McCartney on staff and we know he is well liked, respected and trusted by everyone in our school community.

Well done Mr Mc.

# IMPORTANT DATES



## MAY

NAPLAN—Grade 3 students—Tuesday 14th, Wednesday 15th, Thursday 16th.

NAPLAN—Grade 5 students—Tuesday 14th, Monday 20th, Tuesday 21st.

Wednesday 15th—Friday 17th Canoe Trip Murray River — selected Grade 5 & 6 students  
(students involved have received all information)

Friday	17th	Music
Saturday	18th	Election Day BBQ & Cake Stall
Wednesday	22nd	MARC Library EDUCATION WEEK OPEN MORNING and MORNING TEA
Tuesday	21st	Pie Warmer
Friday	24th	Walk to school day and pancake breakfast Parent Club meeting—9.00 am Hobbies & Clubs 2.15 pm—3.15 pm
Tuesday	28th	<b>NO</b> pie warmer this week due to special lunch day.
Wednesday	29th	Tooko Incursion (no cost to families)
Thursday	30th	Special Lunch Day—Endless Cup of Soup ( <b>change of date</b> )

## JUNE

Sunday	2nd	Parent Club Social Event
Monday	10th	Public Holiday—Queen's birthday
Thursday	15th	CSIRO presentation
Friday	28th	Last Day—Term 2—1.30 pm finish

**Term 3** 15th July—20th September

**Term 4** 7th October—20th December

### 2020 Foundation Orientation Program dates—

Tuesday 26th November—10.00 am—11.00 am

Tuesday 3rd December—10.00 am—11.30 am

Tuesday 10th December—9.00 am—11.30 am



Proudly funded and supported by:





## SHOWCASING AND CELEBRATING EXCELLENCE IN EDUCATION

Our Education week is filled with activities please check them out below and pass them onto any extended family members or friends that might be interested in attending. Hopefully families can get along to some of the activities that are taking place.

### Monday 20th May

**9:00am-10.00 am—Back to school' assembly** – past student and staff invited to speak followed by whole school reading with the students until 10:00am



**5.30 pm—6.30 pm—** We will have our **2020 Foundation (Prep) information session**. If you know of any families thinking about enrolling at Eppalock PS next year, please invite them along to this night. Enrolments can be lodged by any families with a new student for 2020.

### Wednesday 22nd May



**9:00 am-11:00am—**Will be our '**Open Morning**' where families and friends are invited to visit our school to see learning in action. Students may invite a '**special person**' along on this day.

**11.00 am**

**Shared morning tea.**



### Friday 24th May

**Walk to School Day** followed by pancake breakfast at school.







## Cross Country Report

Congratulations to all students who participated in Cross country. Everyone tried their hardest and represented the school very well. Everyone had a great day and the weather was kind to us.

### 12yr old boys

Ari	16th	Green group
Cooper	22nd	Gold group

### 11yr old Boys

Banjo	17th	Red group
-------	------	-----------

### 10yr old Boys

Henry	21st	Green group
Hamish	56th	Red group

### 9yr old Boys

Micah	139th	Blue group
Connor	116th	Blue Group
Miller	2nd	Red group
Patrick	92nd	Red group
Will.J	7th	Red group
Caileb	44th	Red group
Eddie	49th	Green group

### 12yr old Girls

Tilly	12th	Green group
Dasha	11th	Green group

### 11yr old Girls

Pippa	2nd	Red group
Hannah	42nd	Green group
Liselle	43rd	Green group
April	44th	Green group

### 10yr old girls

Charli W	13th	Green group
----------	------	-------------

### 9yr old Girls

Katie	25th	Red group
Annemieka	6th	Green group

## PARENT CLUB UPDATE ...

- **The Federal Election** is on **Saturday 18<sup>th</sup> May**.

EPS is a registered voting booth, so we are running a BBQ & Cake Stall on the day. Thankyou to everyone who offered to help man the stall, we have now filled all spots . We will be sending home a plate this week asking for donations towards our cake stall. These will need to be dropped off at the school Friday 17<sup>th</sup> or Saturday 18<sup>th</sup> before 8am.

- **Special lunch** will next be on **Thursday May 30<sup>th</sup>**—please note change of date. This is a wonderful special lunch all the students & teachers love.

If you have a favorite family soup recipe you can make a batch & bring it in to share on the day. More details to be communicated closer to the day.

\*Please note Pie warmer will not be on that week ( Tuesday 28th) due to Special lunch day.

## Walk to school day

On Friday the 24th of May we will be holding our Walk to School Day event.

Anyone that would like to walk to school can meet at the corner of Mannes Lane and Patons Road from 8.00am for an 8.15am start.

We will walk along Patons Road to school.

We invite families and adults to walk with us on the day.

There will be a special breakfast waiting for us at school which all students can be part of even if they haven't walked.

If you are able to walk with us OR provide a safety vehicle (by driving behind or in front of us on the day with hazards on) please let us know.

School Uniform is required on the day.

Any questions please contact Mr O'Neill.

### **Eppalock Primary is offering a 5-Week Hockey Program**

Held here at school. Just for fun and learning the game & skills.

A great, sporty 'after-school care' option :-)

Hockey Coach - Hayden Symes, experienced Junior Hockey Coach

Hockey sticks & balls provided. Bring a mouthguard if you have one.

#### **Learn fun hockey skills - beginners & non-players very welcome!**

Cost \$10 per child (covers the full program, to be paid at the start. Money goes to the school towards sports equipment)

Thursday 16th May 3.30pm - 4.30pm (*Grade 5/6s will be away for this one on camp*)

Thursday 23rd May 3.30pm - 4.30pm

Thursday 30th May 3.30pm - 4.30pm

Wednesday 5th June lunchtime

Thursday 13th June 3.30pm - 4.30pm

*\*Preparing our students for the Bendigo Inter-school Hockey Competition: 19<sup>th</sup> June, 2019*



### **SPECIAL LUNCH**

## **THURSDAY, 30th MAY ENDLESS CUP OF SOUP**

# **\$5.00**

**Enjoy an endless cup of delicious home made soup served with a bread roll (lots of variety).**

**Orders and money due , Tuesday 14th May**

XXXXXXXXXXXXXXXXXXXXXXXXXXXX

**Name .....**

**\$5.00 enclosed .....**



## **Council Chatter**

### ***School Pride and Sports Fund Project – update***

The boundary fencing is almost complete with just the gates left to be powder-coated and installed, the tanks on the oval to be fenced off and some tidying up to be done so it all looks schmicko for the kids to be playing around.

We've had confirmation that the old toilet block will be removed in the near future. It will cost of moving it will be covered by the school pride and sports funds and will leave us with the concrete ramp that we will need to address.

Part of this project involves moving the sports shed over to the northern boundary, next to the shipping container. Last year School Council decided to use part of the project funds to purchase a new 6m x 6m shed with a roller door and a personal access door. We're in the process of ordering this now. A new slab will be poured it won't impact the large, old tree. We will sell the old shed when all the equipment is moved into the new shed. The two water tanks next to the sports shed will be moved at the same time. This will really open up this part of the playground.

We look like having approximately \$30,000 remaining in the project budget after the end of all the project works. School Council discussed using this funding for a project that we've had on the books for a while, one that we've not had the funds to be able to do. A cover for the netball/basketball court. This would provide an all-weather covered area (open sides) for hot days, wet-weather play outside, as well as a terrific area for community gatherings such as markets, concerts and even our end of year Christmas Concert. We're currently scoping additional sources of funding and investigation whether we can use the remaining funds for this idea.

Other School Council matters discussed at our 9 May Council Meeting;

4 new sets of indigenous animal print cushions have been ordered for use with our outdoor, wooden spiral steppers, on the south side of the school. This is so that we can use this part of the school as an additional outdoor learning area. Can you help? We're looking for someone that can help us make a big material bag to contain these cushions in when they're not in use.

We're looking at re-seeding the oval. School Council is working with Flora Vic to get costs and information to submit a grant application via the Strathfieldsaye and Community Enterprise Grants.

School Council agreed to investigate purchasing a set of adult aprons with Eppalock Primary School printed on them for use at Eppalock events and fundraisers, bbqs etc.

A plumber has been engaged to reconnect the water to the Arts Shed so that we can get the sinks in the Art Shed working again.

The date for the Trivia Night & Silent Auction has been set – Saturday 10<sup>th</sup> August. Put in your diaries and let's get every family there if possible. Get a table of 6-8 people together. It's an **AWESOME** night of fun! Tickets will be \$20 per person. We're looking for as many donations as possible for our Silent Auction – donated goods and services. So if you know any businesses or can donate anything yourself, please let us know. This is our **BIGGEST** fundraiser and we're hoping to raise over \$7,000.

Discussion continued over the prioritisation of the fundraising funds that have been raised last year and this year. We have well over \$13,000 to spend. We have a long list of wonderful ideas and during April we also sought the children's thoughts on these ideas as well as our own. School Council's David Perry has put together a matrix to help us prioritise these expenditure ideas and we're working through this process over the coming month. The initial focus is on inside resources for the moment (refer to the long list of ideas we reported in last month's Council Chatter) as these types of items are usually the most difficult to find other ways to fund. The other projects/ideas definitely do not come off the list though, we will just prioritise going out and proactively sourcing grants and other external fundraising opportunities to cover them.

No updates to provide re the \$200,000 Inclusive Schools 'Playground Project'. The architect has been provided with our initial ideas and we are waiting to hear back from him on these.

Next school council meeting – Thursday 13 June.





# St Francis Auskick

**Registrations are now open**

**When: Start 26th May 2019**

**Time: 9am—10am**

**Where: Pearce Reserve, Mandurang**

**Cost: \$85**

We are also looking for parents to help out with activities so don't forget to register yourself as a volunteer.



**[www.aflauskick.com.au](http://www.aflauskick.com.au)**



Register under St Francis Auskick Centre

Jane Davis / Coordinator / [StFrancisAuskick@outlook.com](mailto:StFrancisAuskick@outlook.com)

## Fun Mandarin – our School Chinese Language Program

### The Prep/Grade 1s were working on animals this week

pig – zhū	duck – yā zi
little dog - xiǎo gǒu	little cat - xiǎo māo
Little chicken - xiǎo jī	sheep - yáng
tiger – lao hǔ	kangaroo – dài shǔ
panda bear – xióng māo	

### The Grade 2/3s were exploring jobs/careers this week

Jobs / work (eg what is your job) – Gōng zuò

Chef – chú shī

Hairdresser - lǐfǎ shī

Builder – jiàn shè zhě

Lawyer – lǚ shī

Hello - Nǐ hǎo (sounds like Nee how)

How are you? - Nǐ hǎo ma (sounds like Nee how mar)

Good Morning – Zao shang hao (sounds like Zar shung how)

Goodbye – zài jiàn (sounds like tzai tzien)

Thank you – xiè (sounds like seair seair)

### The Grade 4/5/6s were learning about time this week

o'clock – diǎn and we just put the 'number' 1-12 before it

one o'clock – yī diǎn

two o'clock - liǎng diǎn

three o'clock - sān diǎn

four o'clock - sì diǎn

five o'clock - wǔ diǎn

six o'clock - liù diǎn

seven o'clock - qī diǎn

eight o'clock - bā diǎn

nine o'clock - jiǔ diǎn

ten o'clock - shí diǎn

eleven o'clock - shí yī diǎn

twelve o'clock - shí èr diǎn

and for half-past the hour, we use the word bàn

half past one – yī diǎn bàn

half past three - sān diǎn bàn

half past four - sì diǎn bàn

half past seven - qī diǎn bàn

The kids also did a little test on the computers – Learning about the differences between Australian Schools and Chinese Schools. Next week the Grade 4/5/6s begin their Chinese Projects



# CHILDCARE AT GURRI WANYARRA

CHILDCARE OPERATING HOURS  
Monday to Friday - 9am to 12pm



Browning St, Kangaroo Flat Vic 3655  
gurriwanyarra.com.au

## WELCOME TO OUR CHILDCARE CENTRE

As part of our commitment to customer service, we offer Childcare and Occasional Care facilities to all patrons and general public. Our aim at Gurri Wanyarra Wellbeing Centre is to provide high quality care for your children while you use our facility.

Types of Childcare available:

- **Childcare** - For children whose parents/guardians are present in the centre.
- **Occasional Care** - For children whose parents/guardians are not present in the centre.

## WHAT YOU NEED TO KNOW

### Staff

We have qualified, experienced, professional and friendly staff who will provide your child with the highest quality care, in a fun, safe and well equipped-environment. Our staff encourage children to have fun and develop to their full potential. Our Childcare services comply with all Department of Education & Early Childhood Development regulations.

### Registered Childcare

We are a registered Childcare provider. If you are eligible for any tax deduction for Childcare payments, please keep your payment receipts and submit with your yearly tax return. We are unable to process any Child Care Subsidy through the facility.

### Age

Gurri Wanyarra Wellbeing Centre offer care to children from 6 weeks of age up to 12 years of age. During school holidays you may also book in older children at our Childcare Centre.

### Cancellations

We understand that there may be unexpected times when you will need to cancel your booking. Cancellations received prior to the day can be transferred to another day in the following 14 days. Cancellations received on the day are forfeited.

### Enrolment

An Enrolment Form must be completed PRIOR to your child's first visit. The confidential information provided in this form authorises our staff to act in the case of an emergency and provides us with essential information regarding medical issues, allergies or custodial details. This form must be fully completed and immunisation records must be provided to our Childcare Coordinator to process before you can make your first booking. Non-immunised children cannot attend unless they are deemed exempt from immunisation.

### What to bring

Please ensure that you have packed nappies, change of clothes, drink and snack. Our Childcare centre does not provide any food. We encourage you to bring healthy snacks and drinks for your child. **We are a nut-free Childcare Centre.** For toilet training children, please bring a change of clothes. We encourage you to inform staff of your child's toilet training procedures so we can assist appropriately.

### General Information

We have a 'no toy' policy in our Childcare Centre, however we do accept comfort/security items if required. We take no responsibility for lost or damaged items.

## FEES

Type	Cost
Childcare 90 Mins Member	\$8.50
Childcare 90 Mins Non-Member	\$10.50
Occasional Care 90 Mins Member	\$15.50
Occasional Care 90 Mins Non-Member	\$18.50

For more information please feel free to speak to one of our friendly reception or Childcare staff. Payments are to be made at reception on day of attendance.

## BOOKINGS AND PAYMENTS

Bookings are essential and can be made up to 2 weeks in advance. Bookings can be made on any half hour between 9am and 12pm for a minimum of 90 minutes and payment is required on the day of the booking. Bookings can be made in person or by phoning Gurri Wanyarra Wellbeing Centre. Regulations limit the number of children we can cater to at any one time, therefore it is essential you arrive and depart our Childcare facilities as per the time you have booked.

## OTHER SERVICES

The Gurri Wanyarra Wellbeing Centre is accessible year-round for people of all ages and abilities, featuring:

- A 51.5m, eight-lane swimming pool with a movable boom to create two 25m pools
- Beach-entry leisure pool for toddlers, children and family swimming
- Zero depth splash park providing aqua play for all Warm-water program pool and spa pool facilities Steam room and sauna
- Gymnasium and group fitness rooms
- Childcare and multipurpose room
- Health and wellness
- Centre Café