

Our Philosophy

OSHC Adventures aims to provide high-quality recreational care for primary school-aged children, in a welcoming, comfortable, and safe environment while their guardians work, study, seek employment, or have respite time. OSHC provides a diverse range of programmed and self-initiated pursuits, where children can interact with peers of varying ages, backgrounds, and ability levels. OSHC Adventures acknowledges the value of play and of providing opportunities for challenge and ongoing learning.

We apply the following principles as the starting point for good practice:

- Provide a safe and healthy environment
- Promote well-being and Belonging
- Promote the importance of play
- Reflect the cultural and linguistic diversity of families and the community
- Provide clear and open communication to all stakeholders
- Cater nutritionally to educate children about their health and well-being
- Promote respect for individuality and uniqueness through acknowledgment, encouragement, and empowerment
- Build a secure, trusting environment for children and their families

Arrival and Collection of Children

Children can only be collected by nominated parents, guardians, and emergency contacts. Requests for alternative arrangements must be made prior to and in writing to the program. In emergency situations verbal permission via phone or in person or in writing may be granted. The authorised person delivering or collecting must consult with a staff member and present a form of Identification to the OSHC Staff.

Children must always be signed in and out of all programs (including the time this occurs) by parents, guardians or emergency contacts.

In the case of custody orders, parents must provide a copy to the program. The custody order will be kept confidentially. It is not the role of staff to interpret Court Orders. Staff will comply with orders as they are written and are expected not to accept a parent's interpretation of those orders.

Our Location

We operate our service in the old school building and regularly use the school's outdoor and playground spaces during our session times.



National Quality Framework

The Outside School Hours Care Program is regulated by the National Quality Framework. The Acts which apply to this service include:

- Education and Care Services National Regulations (December 2011)
- Education and Care Services National Law Act
- My Time, Our Place Framework for School-Aged Care
- Early Years Learning Framework

Health and Safety

Medication

All Medical information provided to Eppalock Primary School OSHC Program must be accurate and updated Immediately if any change occurs. Medication can only be administered to children by educators once the medication form has been completed and signed by a parent or caregiver.

Sun Smart

Eppalock Primary School is a Sun Smart School. All children must bring their own wide-brimmed hat to wear in Terms 1 and 4. If children do not have a hat they will be asked to play indoors or stay in a shaded area. Children must also wear sunscreen which is provided by the service. If a child is unable to use the services supplied sunscreen they must provide a suitable sunscreen at the parent/caregiver's cost.

How to Enrol

Visit

www.oshcadventures.com.au

to enroll at Eppalock Primary School OSHC program today!

Bookings, Cancellations and Non-Attendance

Families wishing to use the Eppalock Primary School OSHC Service must register their child/children prior to attendance.

Families are required to notify OSHC Adventures of any changes to booking arrangements. OSHC Adventures requires 3 days' notice of cancellations. No refunds will be provided and the session fees will be charged for non-attendance.

In the event that a child does not attend their booked OSHC session, the following procedures apply:

- The Service will call your child over the public address system to attend the program.
- if your child is still unaccounted for, a thorough search of the school grounds will be conducted.
- The parents (or nominated emergency contact person) will be immediately notified.
- Victoria police may be called to assist in locating the child.

Hours of Operation and Costs

After School Care

3:15 pm – 6:00 pm, Monday - Friday

\$30.00 per Session

\$3.63 after *Max CCS

Pupil Free Days

8:00 am – 6:00 pm, Monday - Friday

\$97.00 per Session

\$12.33 after *Max CCS

*Eligible families can receive subsidies of up to 90% on fees with the Child Care Subsidy (CCS). We strongly recommend you apply for the CCS to determine your eligibility.

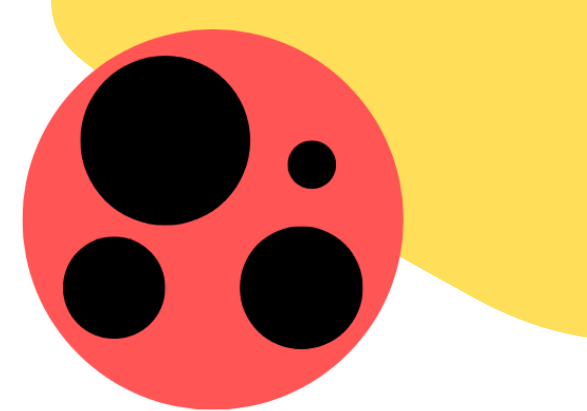
Your eligibility for the subsidy is determined by your family's annual adjusted taxable income, an activity test, and the type of childcare service you are using.

To find out if you are eligible, simply log into MyGov and complete your Child Care Subsidy Assessment. You will receive a notification from Centrelink if your claim has been assessed and/or approved.

Invoices and Late Fees

Invoices are distributed via the Xplor Home app week in arrears.

Fees must be paid by the Due Date printed on the account via Direct Debit, or pay now feature.



OSHC ADVENTURES

School Aged Child Care

Family Information Brochure

We welcome your family to the Eppalock Primary School Outside School Hours Care (OSHC). Our OSHC provides care for school-aged children from the Eppalock Primary School Community.

We believe that Out of School Hours Care is a valuable and integral part of the School and local community and aims to provide a fun, caring, and secure environment that caters to the social, emotional, physical, cultural, and developmental needs of children.



Eppalock Primary School OSHC
149 Patons Rd, Axe Creek VIC 3551
Service Mobile: 0493 870 743
Email: Admin@oshcadventures.com.au
Website: www.oshcadventures.com.au